

Colloidal Silver PPM Meter instructions

Colloidal Silver Meter 0 – 99ppm

Congratulations, you have purchased a high quality, precision digital ppm meter. It is guaranteed against manufacturing defects for one year.

To Operate

Press and release the ON button once to start meter. Immerse the probe tip in the solution and read the value. The unit will automatically switch off after about 30 seconds. If the meter automatically turns off before you have finished reading the solution, simply press and release ON button again to restart the meter.

If you wish to hold the reading from the solution, press and release the ON button a second time while the probe tip is still in the solution and the reading of the solution will be locked in for 12 seconds.

Measuring PPM

- Step 1:** PPM meters accurately read the mineral content of water, but cannot determine what the minerals are; this requires a Spectrometer costing many thousands of dollars. Therefore to accurately measure the ppm content of silver in Colloidal Silver, it is necessary to first measure the ppm content of water before generating Colloidal Silver. Distilled water typically measures 1 to 2 ppm. (Tap water is usually between 30 ppm and 150 ppm.) Therefore to make 5 ppm strength Colloidal Silver from 2 ppm distilled water, you will need to run your Colloidal Silver generator until you obtain a reading of 7 ppm on the meter.
- Step 2:** Cleaning the probe face regularly will ensure an accurate reading. If the read out, when not immersed in liquid, is above 00, the probe face requires cleaning, or you need to reset the meter to factory presets (see below).
- Step 3:** For an accurate reading some temperature compensation time may be needed. The meter must first read the temperature of the fluid before it can calculate the ppm measurement.
- Step 4:** This product is NOT WATERPROOF. Only the tip should be submerged.

Cleaning the Probe face Electrodes

Any problem that develops with a Colloidal Silver ppm Meter can usually be traced to contamination of the two electrodes on the probe face. These can easily be cleaned as follows:

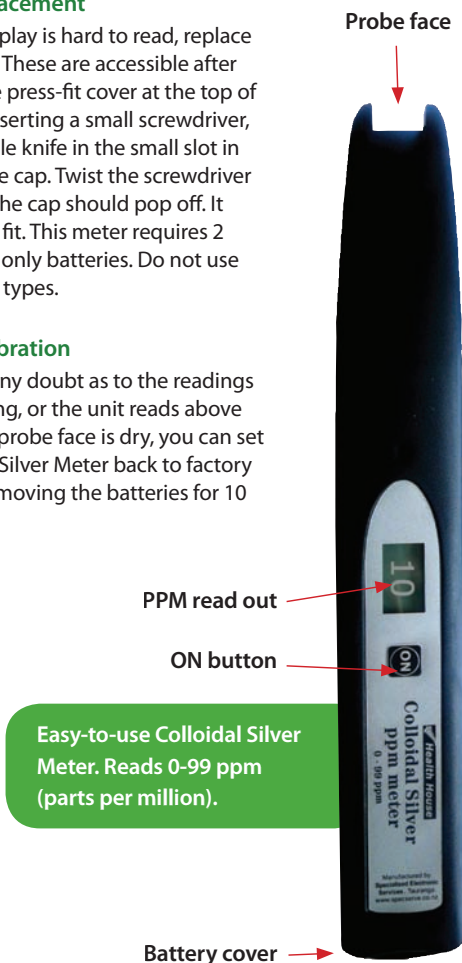
- Step 1:** Apply some Jiff, Ajax, or a similar water-soluble household cleaner to a toothbrush and scrub clean the electrodes and surrounding area, as if you were cleaning your teeth. (Soap will also work in most cases.)
- Step 2:** Rinse the electrodes thoroughly under a hot running tap, continuing to brush the area until all trace of cleaner has gone from the toothbrush and electrode area.
- Step 3:** Dry the electrodes with a newly washed towel or paper towel.

Battery replacement

When the display is hard to read, replace the batteries. These are accessible after removing the press-fit cover at the top of the unit by inserting a small screwdriver, or tip of a table knife in the small slot in the side of the cap. Twist the screwdriver or knife and the cap should pop off. It is just a press fit. This meter requires 2 AAA Alkaline only batteries. Do not use rechargeable types.

To reset calibration

If you are in any doubt as to the readings you are getting, or the unit reads above 00 when the probe face is dry, you can set the Colloidal Silver Meter back to factory presets by removing the batteries for 10 minutes.





Health House

Private Bag 12029

61 Maleme Street

Tauranga 3112 New Zealand